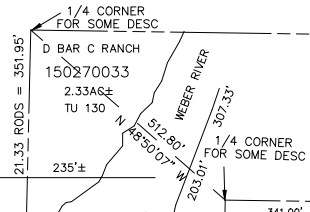


SW 1/4
SECTION 8, T.6N., R.2W., S.L.B. & M.

IN WEBER COUNTY
SCALE 1" = 200'

TAXING UNIT: 53, 130



SEE PAGE 27-4

SEE PAGE 27-4
0028

LAURIE A LUTZ
150270078
30.23 AC±
TU 53

S 89°47' W 702.3' 1113.78' S 89°50' W 850'

DEON GEORGE MCFARLAND & TERRI LYN MCFARLAND FAMILY TRUST ETAL
150270046
4.00 AC±
TU 53

DEON GEORGE MCFARLAND & TERRI LYN MCFARLAND FAMILY TRUST ETAL

150270019
29.44 AC±
TU 53

LAURIE A LUTZ
150270077
14.06 AC±
TU 53

MARK L WHALEY & WF SYLVIA D
150270052
2.68 AC±
TU 53

CHRISTOPHER D SCOTT & WF SARAH M
150270051
1.41 AC±
TU 53

GGA, LLC
150270096
8.15 AC±
TU 53

DEON GEORGE MCFARLAND & TERRI LYN MCFARLAND FAMILY TRUST ETAL
(150270020)
TU 53

GGA, LLC
150270025
5.21 AC±
TU 53

GIBSON FAMILY, LLC
150270026
12 AC±
TU 53

GIBSON FAMILY, LLC
150270023
39.15 AC±
TU 53

VIRGIL J HUNT & WF PEARL V
150270050
6.84 AC±
TU 53

SEE PAGE 24

SEE PAGE 27-2

ION PAUL FRANTER (150270021)

4700